

**Authorised Channel Partner****SALOC Technologies Pvt. Ltd.,**

#274/14, New Guddada halli, Mysore Road,

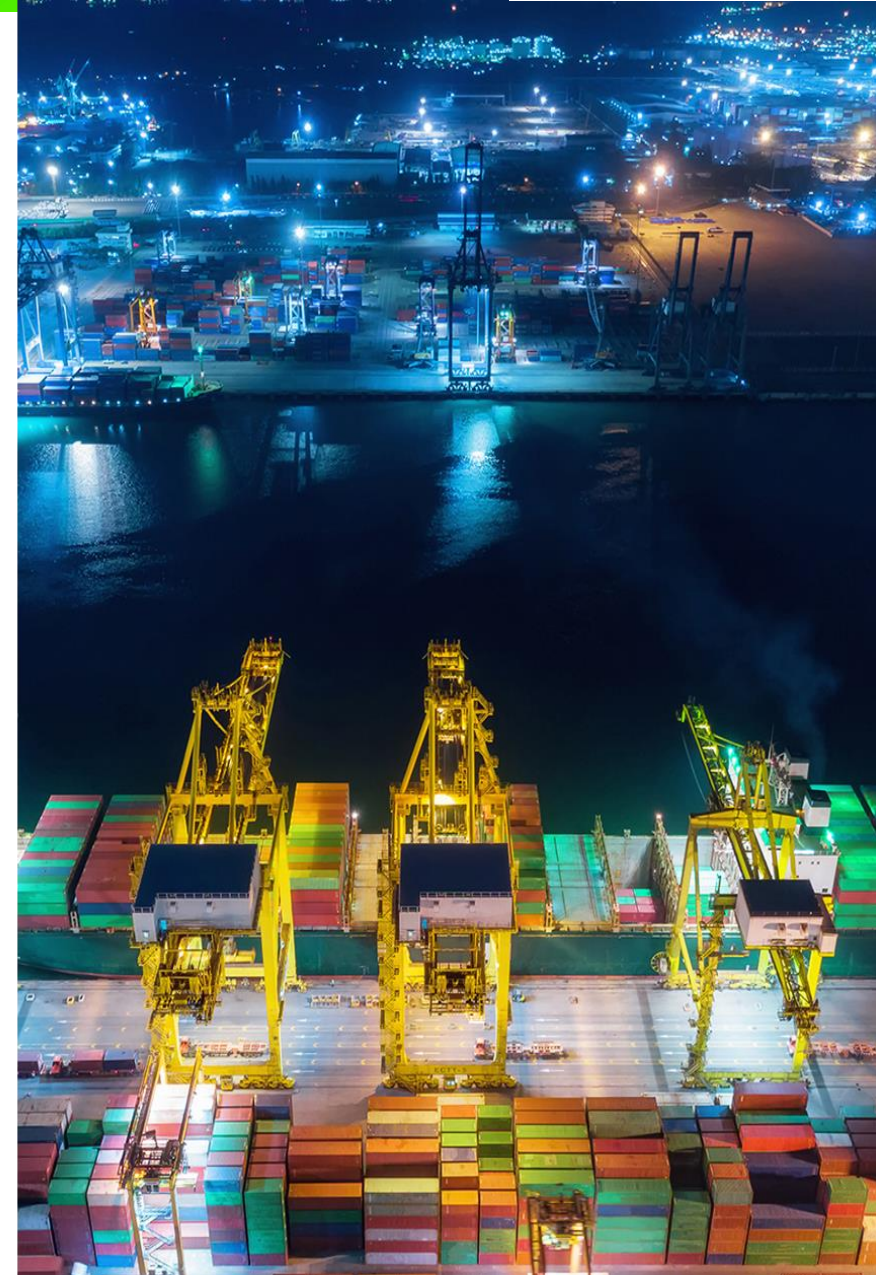
Bangalore - 560026, Karnataka .

Phone : 91-80-2675 5000

Mobile / WhatsApp : 91-98454 55258 / 96864 47828

Mail to : sales@saloc.in, surendran@saloc.in

Website : www.saloc.in

**DRIVES SPECIALISTS SINCE 1973**



- **AC Drives range**

- Commander C – General Purpose drive
- Unidrive M100 ~ M700 – Manufacturing Automation drive
- Powerdrive F300, Pumpdrive F600 – Fan and Pump Application
- Elevator E300 – Elevator application
- NE Drive – General Purpose drive

- **DC Drives**

- Mentor MP – Intelligent DC drive

- **Servo Drives**

- Digitax HD – High performance machinery servo drive
- Digitax SF – General Purpose Machinery Servo drive



0.25 kW to 132 kW (0.33 hp to 200 hp)  
100V | 200V | 400V  
9 frame sizes

- Open loop vector, V/Hz for easy configuration
  - ✓ 100% torque available to 1Hz
  - ✓ Slip compensation
  - ✓ Multi-motor control
  - ✓ Square law V/F mode
  - ✓ Dynamic V/F mode
  - ✓ Auto tune (stationary and rotating)
- Enhanced open loop RFC
  - ✓ Closed current loop for greater stability
  - ✓ 180% motor overload

Onboard PLC

Dual Safe Torque Off (STO) on Commander C300

- 200/400/575/690 Volts
- Induction motor control
  - Fixed boost & Vector Control
  - Square Law
  - Dynamic V-F
  - Sensorless Vector Control
  - Closed Loop Vector Control
- PM Motor Control
  - Sensorless Vector Control
  - Closed Loop Vector Control
- M700 & M600 available as 0.75kW – 250kW HD as panel mount
- Compact
- Easy to use
- Same parameter architecture
- Realtime Ethernet & Fieldbus connectivity
- IEC61131-3 based PLC functionality
- Onboard Motion control (M600 and above)





- Ready to use, pre engineered concept in a small footprint
- Easy to integrate with existing cubicles and fieldbus systems
- Range of protection & cooling options available
- Cubicle layout is service friendly - no 'back to back' drives
- Simple quote using on line configurator
- Short lead times
- Attractive for System Integrators:
  - All the standard power components with no engineering or build
  - Allows them to focus on their added value for customers

From the drive specialists

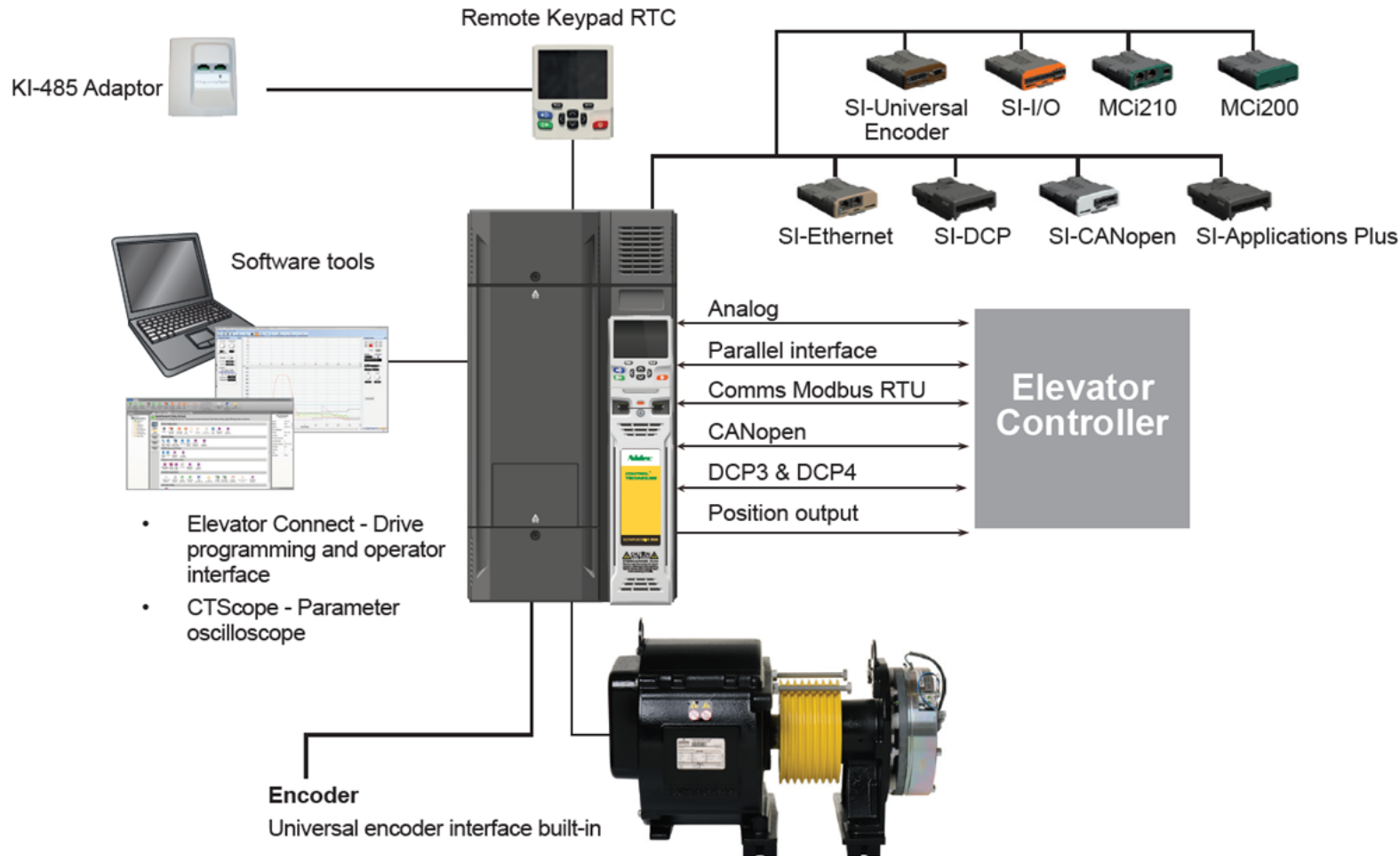


**Free 5 Year Warranty**  
to share our confidence in the  
reliability of Control Techniques  
drives

- Applications involving the flow of water demand exceptional reliability and low energy consumption
- The F600 builds on our company's **five decades of drives expertise**, delivering precise, dependable control
- Everything you need is baked into the drive itself. It's a **dedicated, specialist pump drive**, designed from the ground up to deliver the reliability and efficiency you need



DRIVES SPECIALISTS SINCE 1973



## System Integration Modules

**3x System Integration (SI)** module slots for communications, I/O, additional feedback devices and automation controllers

## Universal Encoder Interface

Flexible dual port universal encoder interface supporting **16 different encoder types** without the need for additional interface cards. Includes Incremental, SinCos, SSI, EnDat, Hiperface and BiSS

## Advanced Motor Control

Peak performance in any system, whether coupled with Induction or Permanent Magnet motors

**WR-H****WR-E**

Capacity: 408 kg - 1150 kg  
Roping: 2:1  
Single Wrap  
Undercut U  
Foot Pad Flatness: < 0.5mm  
Protection Rating: IP40  
Insulation Class: F  
Poles: 20  
Plate Brake  
Picking/Holding Voltage : DC110V  
Motor Rated Voltage: AC380V  
Duty Cycle:S5-40%

Roping: 2:1 | 1:1  
Double Wrap  
Undercut U  
Foot Pad Flatness: < 0.5mm  
Protection Rating: IP40  
Insulation Class: F  
Drum Brake  
Picking / Holding Voltage: DC 200V / DC 100V  
Rated Voltage: AC 380V  
Duty Cycle: S5-40%





# NE Drive (VFD)

Power Range | 0.4KW ~ 900KW, 0 ~ 550Hz

Powerful function Superior adaptability Outstanding control performance

communication option cards

Modbus PROFIBUS PROFINET CC-Link Modbus TCP



**HIGH PERFORMANCE VECTOR CONTROL DRIVE**

MTS-MTS3 Series



[VIEW](#)

0,12...15 kW

Motore Asincrono 3-fase per alimentazione da inverter IE2/IE3

AC 3-phase inverter duty Asynchronous motor IE2/IE3

MTES-MTES3 Series



[VIEW](#)

5,5...315 kW

Motore Asincrono 3-fase per alimentazione da inverter IE2/IE3

AC 3-phase inverter duty Asynchronous motor IE2/IE3

HQL/HQLa Series



[VIEW](#)

0,55...1.115 kW

Motore Asincrono 3-fase ad alte prestazioni per inverter

AC 3-phase high performances inverter duty motor

HQLa-Li Series



[VIEW](#)

550...2.870 Nm

Motore Asincrono 3-fase a bassa inerzia per inverter

AC 3-phase inverter duty very low inertia motor

QLS Series



[VIEW](#)

46...2.300 Nm

Servomotore Sincrono 3-fase a magneti permanenti

AC 3-phase permanent magnets Synchronous servomotor

QS Series



[VIEW](#)

1,7...500 kW

Motore Sincrono 3-fase a magneti permanenti efficienza: IE4

AC 3-phase permanent magnets Synchronous motor IE4 efficiency

QSR Series



[VIEW](#)

0,3...500 kW

Motore Sincrono 3-fase a Riluttanza

AC 3-phase RELUCTANCE Synchronous motor

LQ Series



[VIEW](#)

3,2...456 kW

Motore asincrono 3-fase per inverter raffreddato a liquido

AC 3-phase inverter duty liquid cooled asynchronous motor

LTS Series



[VIEW](#)

120...14.000 Nm

Motore COPPIA sincrono raffreddato a liquido

Liquid cooled synchronous TORQUE motor

LTS-TB Series



[VIEW](#)

680...14.000 Nm

Motore COPPIA sincrono raffreddato a liquido con reggispinta

Liquid cooled synchronous TORQUE motor with thrust bearing

# DIGITAX SF Servo Drives



**DRIVES SPECIALISTS SINCE 1973**

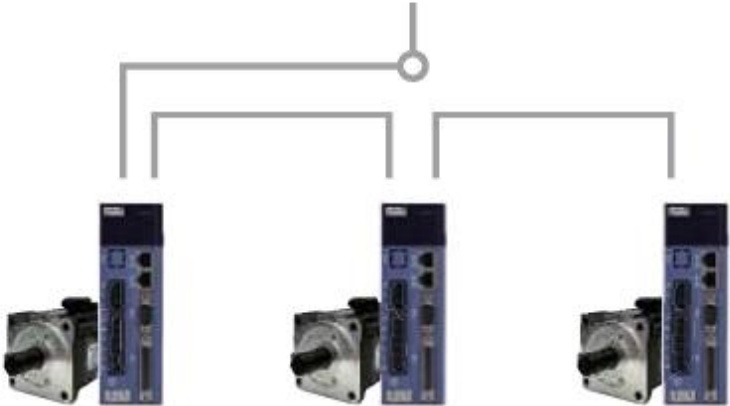
**Digitax SF range of servo drives & motors is a**

- compact
- cost effective
- easy to use solution for low power application requirements.

High performance drives with pulse or analogue interface & serial communication

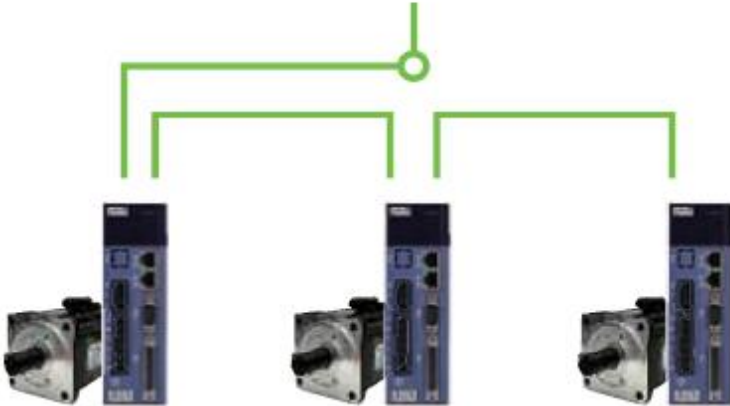
Range of light-duty industrial motors available in several inertia levels to meet different application requirements

EtherCAT



DS F II -MV 62 Servo system

Pulse control



DS F II -MV 61 Servo system

# DIGITAX HD Servo Drives



	<b>M753 EtherCAT</b>	<b>M751 Base</b>	<b>M750 EtherNet</b>	<b>M754 MCI</b>
Onboard Communications	2-port EtherCAT	2-port RS485	2-port Ethernet switch	2-port Ethernet switch
Fieldbus	EtherCAT	Modbus RTU	Modbus TCP/ IP, Ethernet/IP, Profinet RT	Modbus TCP/IP
Real Time Motion	EtherCAT (CoE)	None	RTMoE	RTMoE
Analog I/O		1 Analog Input $\pm 10V$ , 12 bits (11 bits + sign)		
Digital I/O		2DI, 2DO (100 mA), 1 motor brake output (1 A, max 1.3 A)		
Pulse Train Input		Frequency/Direction 5 V differential, 500 kHz		
Encoder Feedback		2 x Encoder input and 1 simulated encoder output		
Supported Encoders		Resolver, Quadrature, AB Servo, SinCos, EnDat (2.1/2.2), SSI, BiSS, Hiperface		
Safety		2 x Safe Torque Off (STO) via terminal, PLe, SIL3		
Onboard Communications	2-port EtherCAT	2-port RS485	2-port Ethernet switch	2-port Ethernet switch



25 - 7,030A

24 - 400V / 575V / 690V

Two or four quadrant operation

## Typical applications

*Crane & hoist, Test rigs & dynamometers, Magnetic grabs, Tire & rubber, Metals, Wire drawing, Paper*

## Flexible integration

- Internal field controller
- Intelligent field weakening
- External controller not required
- Flux control enhanced performance
- FXMP25 field control to 25A

## Easy upgrade

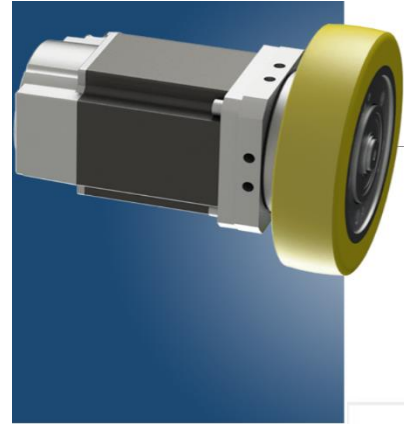
- Simple upgrade for Mentor II
  - Same physical dimensions
  - Same power connections
  - Migration software tools

## Flexible field control

- 3 x slots for automation, I/O, feedback & comms
- Smartcard for PLC program/parameter storage
- Software tools for easy configuration & monitoring

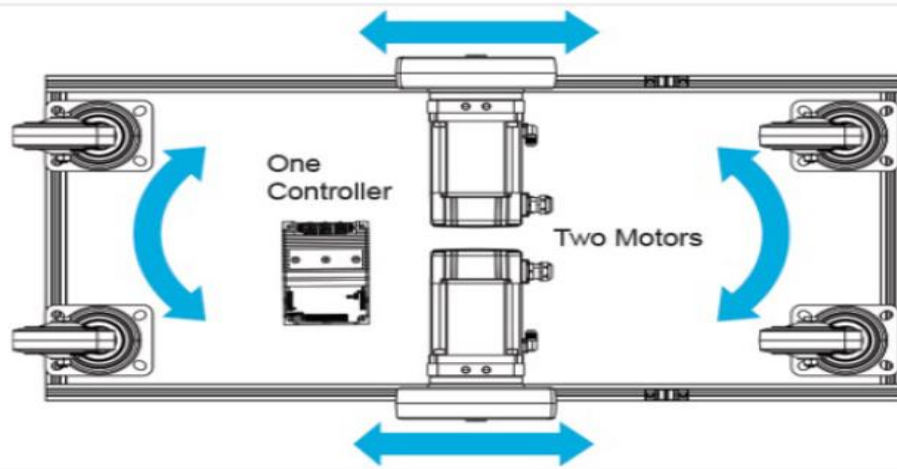
## Reliable performance

- High performance control
- Galvanic isolation between power & control
- Poor power supply & lightning strike protection
- Integrated drive & motor protection



**Motor Wheels**

To make Robot building faster and easier, Roboteq offers a line up of integrated Motor/Gearbox/Wheel with matching, pre-configured and tuned Motor Controller



**COMPLETE  
SOLUTIONS**

AGV

**CHOSEN BY THE WORLD'S TOP ROBOTS MAKER**

Our Robotics Sub-Systems are the most versatile, highest performance, and easiest to integrate. No wonder they have been selected by the World's Finest manufacturers of Mobile Robots.



- Digistart D1
  - 11 models (3 frames)
  - 18A ~ 200A (internal bypassed)
- Digistart D2
  - 11 models (3 frames)
  - 18A ~ 200A (internal bypassed)
- Mains Voltage
  - 200 ~ 440 VAC or 200 ~ 575 VAC
- Control Voltage
  - 110 ~ 440 VAC or 24 VAC/VDC



- Digistart D4
  - 22 models (2 frames)
  - 24A ~ 580A (internal bypassed)
- Digistart D5
  - 27 models (3 frames)
  - 24A ~ 1250A (internal bypassed)
  - 229A ~ 1620A (external bypassed)
- Mains Voltage
  - 200 ~ 525 VAC or 380 ~ 600/690 VAC
- Control Voltage
  - 110 ~ 240 VAC or 24 VAC/VDC

